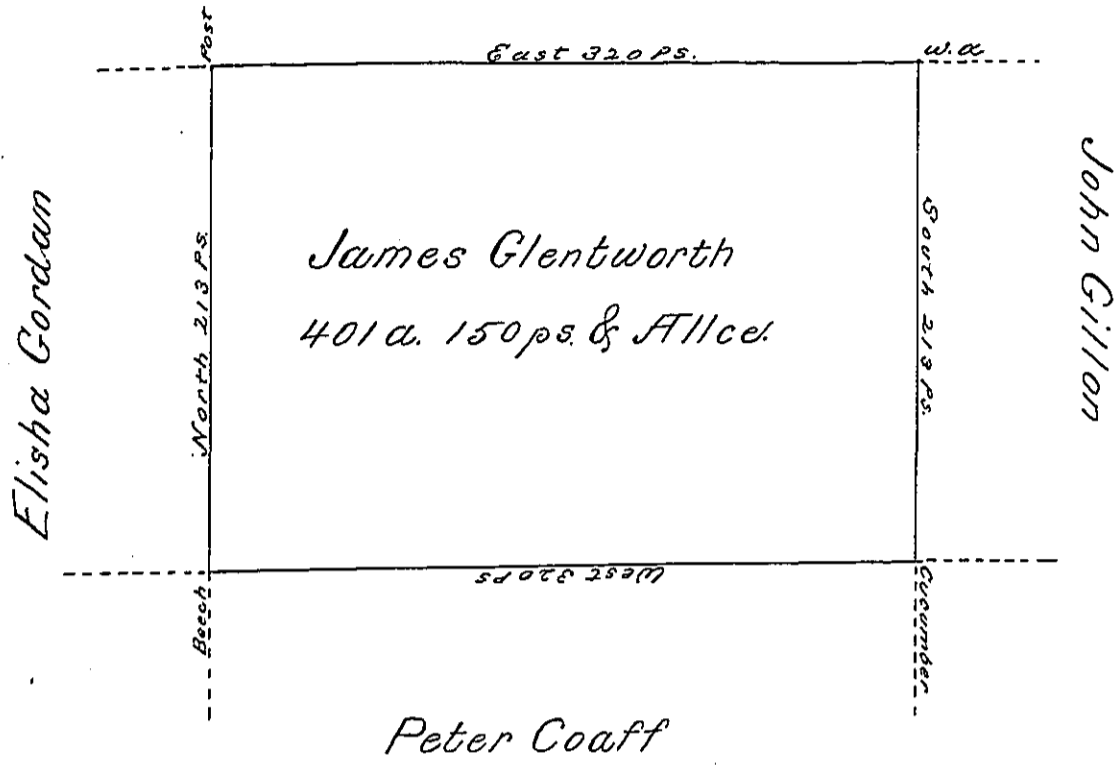


Near the district line No. 1



Situate on the west side of French Creek in Stegheny County containing 401 acres and 150 ps. and allowance of six pcent for Roads &c. Surveyed the 9th. day of October 1794 In pursuance of a warrant bearing date the 30th. day of May 1792.

Wm. Power Dy Sr.
To Daniel Brodhead Esq. }
Surveyor General }

IN TESTIMONY that the above is a copy of the original remaining on file in the Department of Internal Affairs of Pennsylvania, made conformably to an Act of Assembly approved the 16th day of February, 1833, I have hereunto set my Hand and caused the Seal of said Department to be affixed at Harrisburg, this third day of October 1899

James W. Pitta
Secretary of Internal Affairs.